

QCOLOR

Appearance inspection by colorimetry

Appearance inspection by colorimetry



- + Color inspection in less than 5 seconds
- + Repeatable, mastered inspection
- + Easy configuration
- + Takes into account surface finish



Surface finish is taken into account during the inspection

For a same color treatment, a decorated surface does not have the same render than a rough surface

LE FUTUR EN MOUVEMENTS

centagora

► INSPECTION EQUIPMENT

► Mechanical aging process

► Special machinery

► Watchmakers tools

Appearance inspection by colorimetry

Two inspection modes

1. Inspection characterized by a **reference sample** and measurement of the **Delta E** :

Disparity between the measured color and the reference.

User defines an **acceptance limit value**, such as Delta E < 2.5.

$\Delta E > 2.5$

$\Delta E < 2.5$

$\Delta E < 2.5$

$\Delta E > 2.5$

$\Delta E > 2.5$



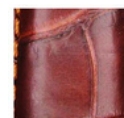
KO



OK



OK



KO



KO

2. Inspection characterized by a **tolerance interval** defined between two MIN and MAX color samples.

MAXI

MINI



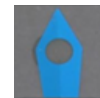
KO



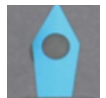
OK



OK



OK



KO

Specifications

+ Color conformity based on **CIELAB, RGB, HSV values**

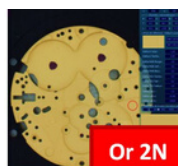
+ **Measured inspection**, it is no longer biased

+ Able to inspect different color areas in a single shot

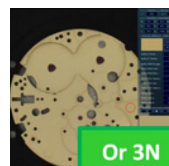
+ **Simple and friendly configuration** thanks to the QColor software

+ The QColor software can be connected to a **production or quality monitoring software**

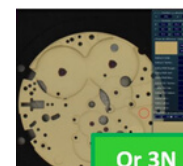
+ Networking allowing access to the **statistic management interface**



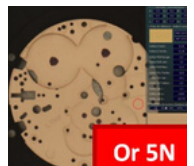
Or 2N



Or 3N

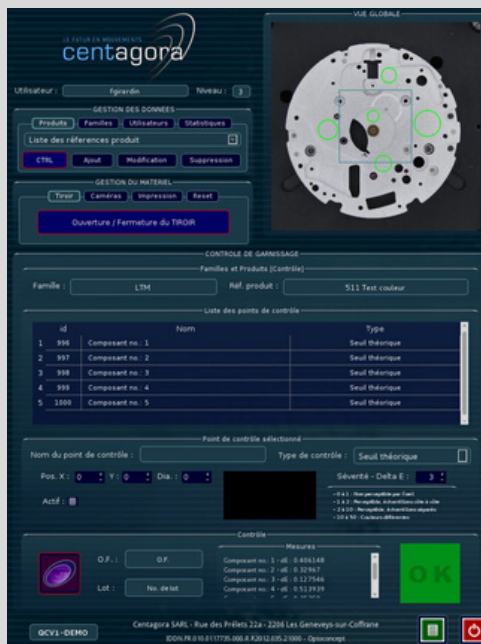


Or 3N



Or 5N

Color inspection in less than 5 seconds



+ On all sorts of materials (metal, polymer, leather...)

+ On all sorts of surfaces (polished, dull, satiny...)

